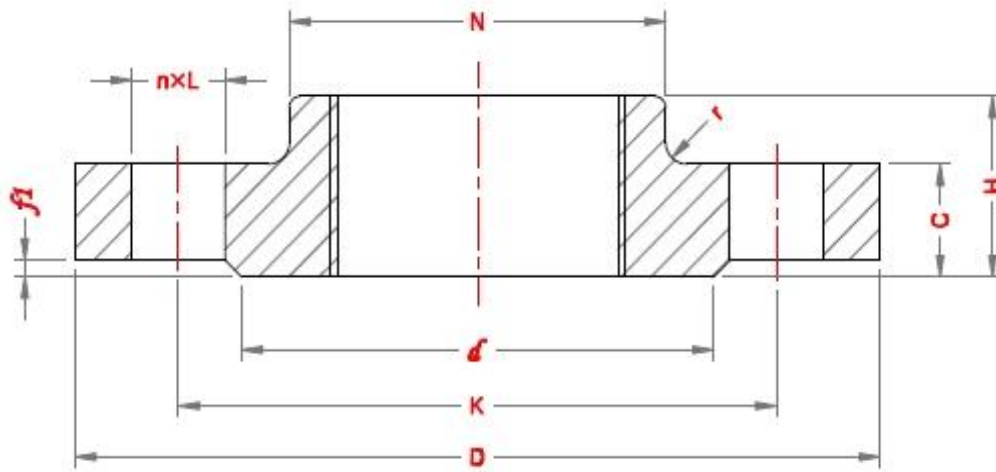


**Threaded Flanges - EN1092-1**



**PN 100**

DN	Pipe OD, A	Outside Diamete, D	Diameter of Bolt Circle, K	Dia of Bolt Hole, L	No. of bolt	Diameter of Raised Face, d	Height of Raised Face, f1	Flange thickness, C	Length of Flange, H	Neck Diameter, N	Radius of Corners, r
10	17.2	100	70	14	4	40	2	20	28	40	4
15	21.3	105	75	14	4	45	2	20	28	43	4
20	26.9	130	90	18	4	58	2	20	30	52	4
25	33.7	140	100	18	4	68	2	24	32	60	4
32	42.4	155	110	22	4	78	2	24	32	68	6
40	48.3	170	125	22	4	88	3	26	34	80	6
50	60.3	195	145	26	4	102	3	28	36	95	6
65	76.1	220	170	26	8	122	3	30	40	118	6
80	88.9	230	180	26	8	138	3	32	44	130	8
100	114.3	265	210	30	8	162	3	36	52	158	8
125	139.7	315	250	33	8	188	3	40	56	188	8
150	168.3	355	290	33	12	218	3	44	60	225	10