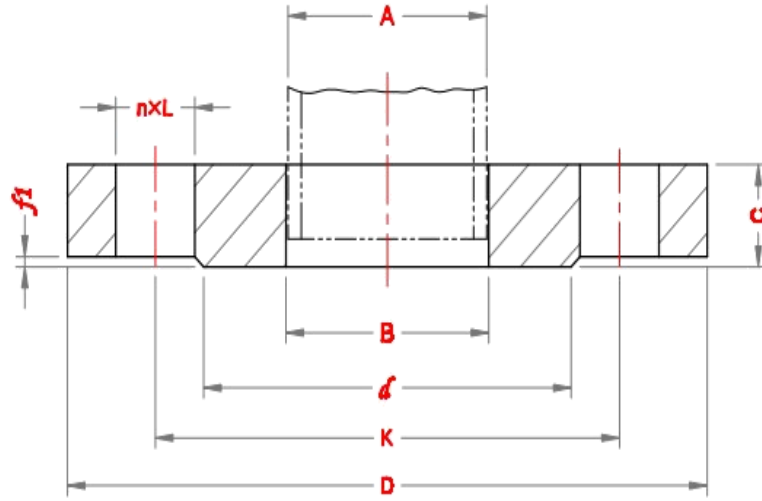


Plate Flanges - EN1092-1



PN 2.5

DN	Pipe OD, A		Outside Diameter, D	Diameter of Bolt Circle, K	Dia of Bolt Hole, L	No. of bolt	Size of Bolt	Flange thickness, C	Diameter of Raised Face, d	Height of Raised Face, f1	Bore diameter, B	
	Series I	Series II									Series I	Series II
10	17.2	14	75	50	11	4	M10	12	35	2	18	15
15	21.3	18	80	55	11	4	M10	12	40	2	22	19
20	26.9	25	90	65	11	4	M10	14	50	2	27.5	26
25	33.7	32	100	75	11	4	M10	14	60	2	34.5	33
32	42.4	38	120	90	14	4	M12	16	70	2	43.5	39
40	48.3	45	130	100	14	4	M12	16	80	3	49.5	46
50	60.3	57	140	110	14	4	M12	16	90	3	61.5	59
65	76.1	79	160	130	14	4	M12	16	110	3	77.5	78
80	88.9	89	190	150	18	4	M16	18	128	3	90.5	91
100	114.3	108	210	170	18	4	M16	18	148	3	116	110
125	139.7	133	240	200	18	8	M16	20	178	3	141.5	135
150	168.3	159	265	225	18	8	M16	20	202	3	170.5	161
200	219.1	219	320	280	18	8	M16	22	258	3	221.5	222
250	273	273	375	335	18	12	M16	24	312	3	276.5	276
300	323.9	325	440	395	22	12	M20	24	365	4	327.5	328
350	355.6	377	490	445	22	12	M20	26	415	4	359.5	380
400	406.4	426	540	495	22	16	M20	28	455	4	411	430
450	457	480	595	550	22	16	M20	30	520	4	462	484
500	508	530	645	600	22	20	M20	30	570	4	513.5	534
600	610	630	755	705	26	20	M24	32	670	5	616.5	634
700	711	720	860	810	26	24	M24	40	775	5	715	724
800	813	820	975	920	30	24	M27	44	880	5	817	824
900	914	920	1075	1020	30	24	M27	48	980	5	918	924
1000	1016	1020	1175	1120	30	28	M27	52	1080	5	1020	1024
1200	1219	1220	1375	1320	30	32	M27	60	1280	5	1223	1224