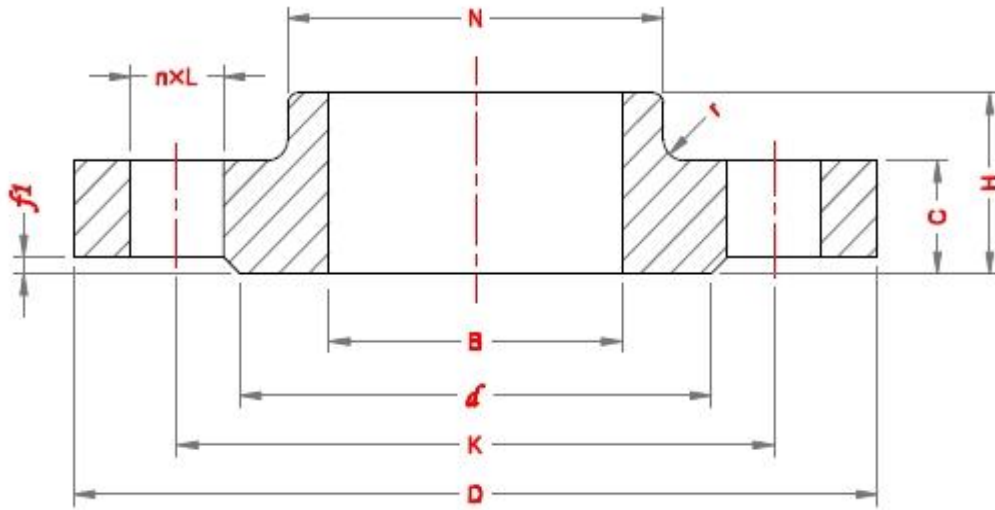


Hubbed slip-on Flanges



PN 25

| DN | Pipe OD, A | | Outside Diameter, D | Diameter of Bolt Circle, K | Dia of Bolt Hole, L | No. of bolt | Diameter of Raised Face, d | Height of Raised Face, f1 | Flange thickness, C | Length of Flange, H | Neck Diameter, N | | Radius of Corners, r | Bore diameter, B | |
|-----|------------|-----------|---------------------|----------------------------|---------------------|-------------|----------------------------|---------------------------|---------------------|---------------------|------------------|-----------|----------------------|------------------|-----------|
| | Series I | Series II | | | | | | | | | Series I | Series II | | Series I | Series II |
| 10 | 17.2 | 14 | 90 | 60 | 14 | 4 | 40 | 2 | 16 | 22 | 30 | | 4 | 18 | 15 |
| 15 | 21.3 | 18 | 95 | 65 | 14 | 4 | 45 | 2 | 16 | 22 | 35 | | 4 | 22 | 19 |
| 20 | 26.9 | 25 | 105 | 75 | 14 | 4 | 58 | 2 | 18 | 26 | 45 | | 4 | 27.5 | 26 |
| 25 | 33.7 | 32 | 115 | 85 | 14 | 4 | 68 | 2 | 18 | 28 | 52 | | 4 | 34.5 | 33 |
| 32 | 42.4 | 38 | 140 | 100 | 18 | 4 | 78 | 2 | 18 | 30 | 60 | | 6 | 43.5 | 39 |
| 40 | 48.3 | 45 | 150 | 110 | 18 | 4 | 88 | 3 | 18 | 32 | 70 | | 6 | 49.5 | 46 |
| 50 | 60.3 | 57 | 165 | 125 | 18 | 4 | 102 | 3 | 20 | 34 | 84 | | 6 | 61.5 | 59 |
| 65 | 76.1 | 79 | 185 | 145 | 18 | 8 | 122 | 3 | 22 | 38 | 104 | | 6 | 77.5 | 78 |
| 80 | 88.9 | 89 | 200 | 160 | 18 | 8 | 138 | 3 | 24 | 40 | 118 | | 8 | 90.5 | 91 |
| 100 | 114.3 | 108 | 235 | 190 | 22 | 8 | 162 | 3 | 24 | 44 | 145 | | 8 | 116 | 110 |
| 125 | 139.7 | 133 | 270 | 220 | 26 | 8 | 188 | 3 | 26 | 48 | 170 | | 8 | 141.5 | 135 |
| 150 | 168.3 | 159 | 300 | 250 | 26 | 8 | 218 | 3 | 28 | 52 | 200 | | 10 | 170.5 | 161 |
| 200 | 219.1 | 219 | 360 | 310 | 26 | 12 | 278 | 3 | 30 | 52 | 256 | | 10 | 221.5 | 222 |
| 250 | 273 | 273 | 435 | 370 | 30 | 12 | 335 | 3 | 32 | 60 | 310 | | 10 | 276.5 | 276 |
| 300 | 323.9 | 325 | 485 | 430 | 30 | 16 | 395 | 4 | 34 | 67 | 364 | | 10 | 327.5 | 328 |
| 350 | 355.6 | 377 | 555 | 490 | 33 | 16 | 450 | 4 | 38 | 72 | 418 | 429 | 12 | 359.5 | 380 |
| 400 | 406.4 | 426 | 620 | 550 | 36 | 16 | 505 | 4 | 40 | 78 | 472 | 484 | 12 | 411 | 430 |
| 450 | 457 | 480 | 670 | 600 | 36 | 20 | 555 | 4 | 46 | 84 | 520 | 534 | 12 | 462 | 485 |
| 500 | 508 | 530 | 730 | 660 | 36 | 20 | 615 | 4 | 48 | 90 | 580 | 594 | 12 | 513.5 | 535 |
| 600 | 610 | 630 | 845 | 770 | 39 | 20 | 720 | 5 | 58 | 100 | 684 | 699 | 12 | 616.5 | 636 |