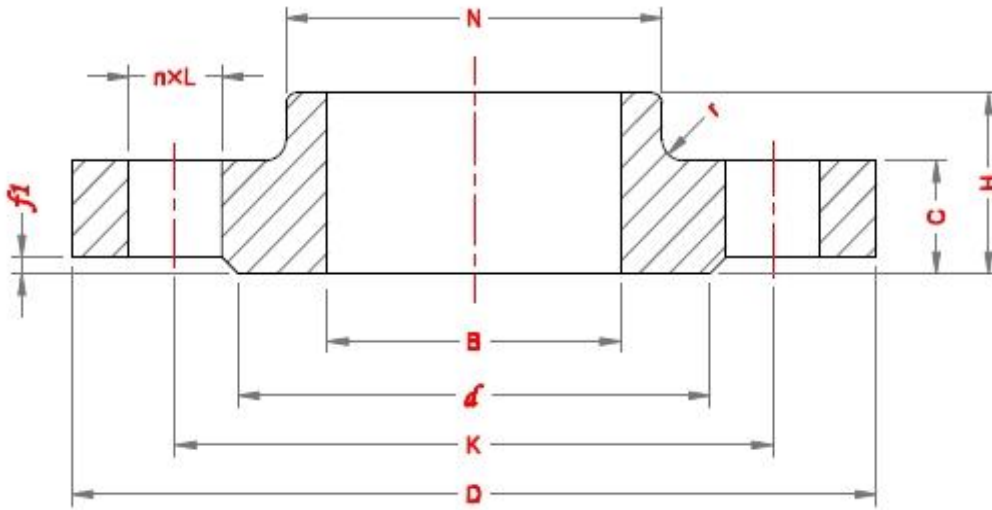




Hubbed slip-on Flanges



PN 16

DN	Pipe OD, A		Outside Diamete, D	Diameter of Bolt Circle, K	Dia of Bolt Hole, L	No. of bolt	Diameter of Raised Face, d	Height of Raised Face, f1	Flange thickness, C	Length of Flange, H	Neck Diameter, N		Radius of Corners, r	Bore diameter, B	
	Series I	Series II									Series I	Series II		Series I	Series II
10	17.2	14	90	60	14	4	40	2	16	22	30		4	18	15
15	21.3	18	95	65	14	4	45	2	16	22	35		4	22	19
20	26.9	25	105	75	14	4	58	2	18	26	45		4	27.5	26
25	33.7	32	115	85	14	4	68	2	18	28	52		4	34.5	33
32	42.4	38	140	100	18	4	78	2	18	30	60		6	43.5	39
40	48.3	45	150	110	18	4	88	3	18	32	70		6	49.5	46
50	60.3	57	165	125	18	4	102	3	18	28	84		6	61.5	59
65	76.1	79	185	145	18	8	122	3	18	32	104		6	77.5	78
80	88.9	89	200	160	18	8	138	3	20	34	118		6	90.5	91
100	114.3	108	220	180	18	8	158	3	20	40	140		8	116	110
125	139.7	133	250	210	18	8	188	3	22	44	168		8	141.5	135
150	168.3	159	285	240	22	8	212	3	22	44	195		10	170.5	161
200	219.1	219	340	295	22	12	268	3	24	44	246		10	221.5	222
250	273	273	405	355	26	12	320	3	26	46	298		12	276.5	276
300	323.9	325	460	410	26	12	378	4	28	46	350		12	327.5	328
350	355.6	377	520	470	26	16	438	4	30	57	400	412	12	359.5	380
400	406.4	426	580	525	30	16	490	4	32	63	456	470	12	411	430
450	457	480	640	585	30	20	550	4	34	38	502	525	12	462	485
500	508	530	715	650	33	20	610	4	36	73	559	581	12	513.5	535
600	610	630	840	770	36	20	725	5	40	83	658	678	12	616.5	635
700	711	720	910	840	36	24	795	5	40	83	750	769	12	718	726
800	813	820	1025	950	39	24	900	5	41	90	864	871	12	820	826
900	914	920	1125	1050	39	28	1000	5	48	94	968	974	12	921	927
1000	1016	1020	1255	1170	42	28	1115	5	59	100	1072	1076	16	1023	1027