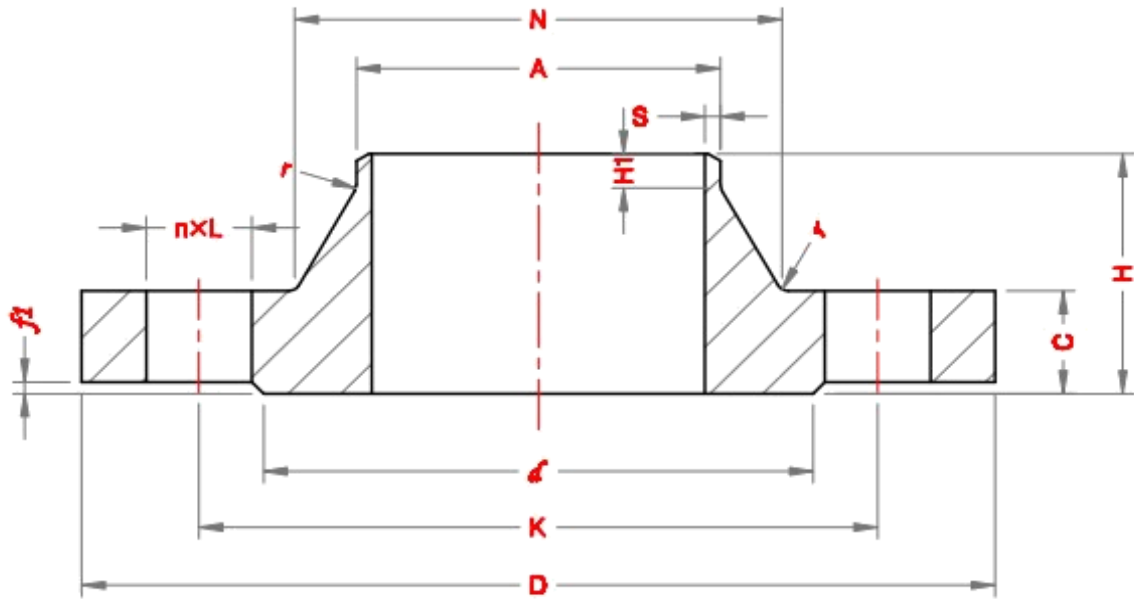


Weld Neck Flanges - EN 1092-1



PN 63

DN	Pipe OD, A		OD, D	Dmtr of Bolt Circle, K	Dmtr of Bolt Holes, L	No. of bolts	Dmtr of Raised Face, d	Height of Raised Face, f1	Flange Thick, C	Length of Flange, H	Neck Diameter, N		Wall thick, S	Length of right end, H1	Radius of Corners, r
	Series I	Series II									Series I	Series II			
10	17.2	14	100	70	14	4	40	2	20	45	32				
15	21.3	18	105	75	14	4	45	2	20	45	34		2.0	6	4
20	26.9	25	130	90	18	4	58	2	22	48	42		2.6	8	4
25	33.7	32	140	100	18	4	68	2	24	58	52		2.6	8	4
32	42.4	38	155	110	22	4	78	2	24	60	62		2.9	8	6
40	48.3	45	170	125	22	4	88	3	26	62	70		2.9	10	6
50	60.3	57	180	135	22	4	102	3	26	62	82		4.0	10	6
65	76.1	79	205	160	22	8	122	3	26	68	98		4.0	12	6
80	88.9	89	215	170	22	8	138	3	28	72	112		4.5	12	8
100	114.3	108	250	200	26	8	162	3	30	78	138		4.5	12	8
125	139.7	133	295	240	30	8	188	3	34	88	168		5.6	12	8
150	168.3	159	345	280	33	8	218	3	36	95	202		6.3	12	10
200	219.1	219	415	345	36	12	285	3	42	110	256		7.1	16	10
250	273	273	470	400	36	12	345	3	46	125	316		8.8	18	12
300	323.9	325	530	460	36	16	410	4	52	140	372		11.0	18	12
350	355.6	377	600	525	39	16	465	4	56	150	420	430	12.5	20	12
400	406.4	426	670	585	42	16	535	4	60	160	475	484	14.2	20	12