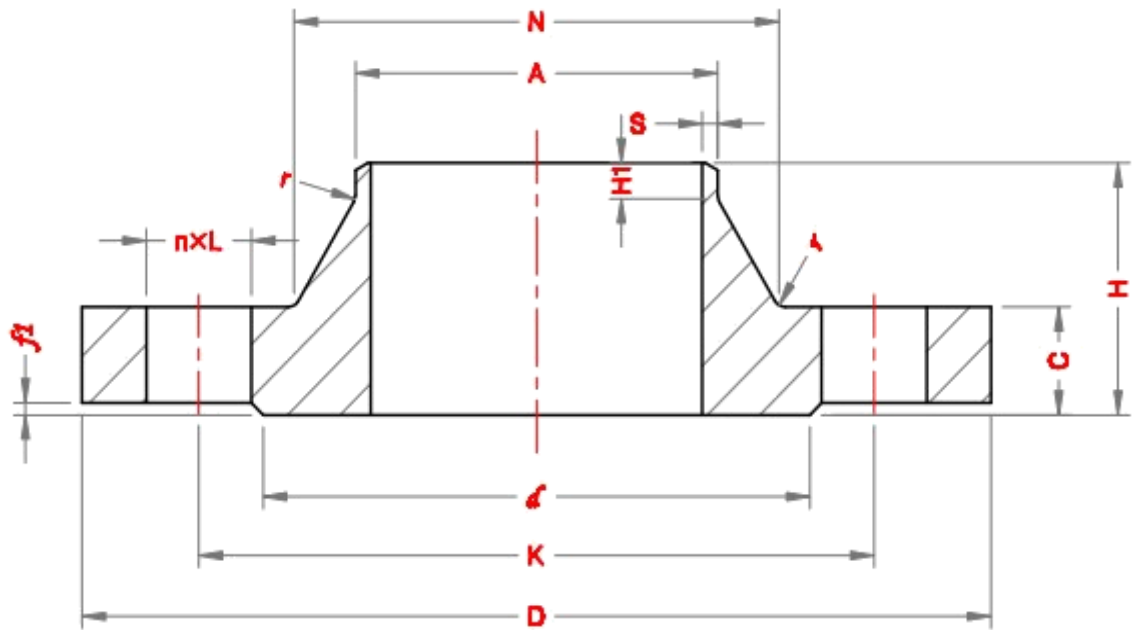


Weld Neck Flanges - EN 1092-1



PN 250

DN	Pipe OD, A	OD, D	Dmtr of Bolt Circle, K	Dmtr of Bolt Holes, L	No. of bolts	Dmtr of Raised Face, d	Height of Raised Face, f1	Flange Thick, C	Length of Flange, H	Neck Diameter, N	Wall thick, S	Length of right end, H1	Radius of Corners, r
10	17.2	125	85	18	4	40	2	24	58	44	2.6	6	4
15	21.3	130	90	18	4	45	2	26	60	48	2.6	6	4
20	26.9	135	95	18	4	58	2	28	62	54	3.2	8	4
25	33.7	150	105	22	4	68	2	28	65	60	3.6	8	4
32	42.4	165	120	22	4	78	2	32	70	72	4.0	8	4
40	48.3	185	135	26	4	88	3	34	80	84	5.0	10	6
50	60.3	200	150	26	8	102	3	38	85	95	6.3	10	6
65	76.1	230	180	26	8	122	3	42	95	124	8.0	12	6
80	101.6	255	200	30	8	138	3	46	102	136	11.0	12	8
100	127	300	235	33	8	162	3	54	120	164	14.2	14	8
125	152.4	340	275	33	12	188	3	60	140	200	16.0	16	8
150	177.8	390	320	36	12	218	3	68	160	240	17.5	18	10
200	244.5	485	400	42	12	285	3	82	190	305	25.0	25	10
250	298.5	585	490	48	16	345	3	100	215	385	32.0	30	12