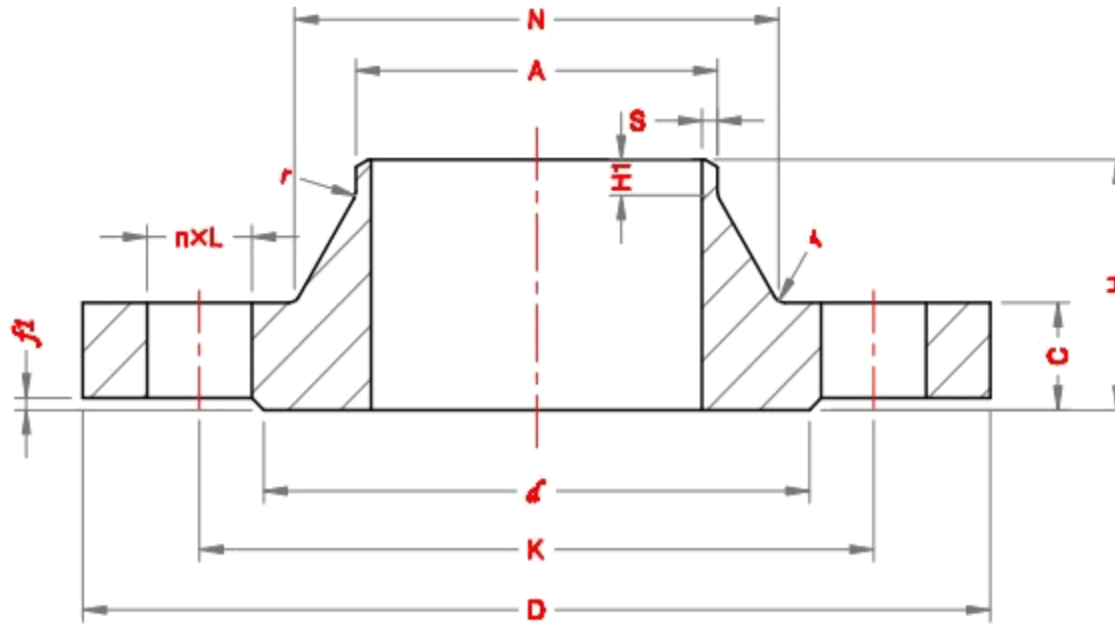


Weld Neck Flanges - EN 1092-1



PN 2.5

DN	Pipe OD, A		Outside Diameter, D	Diameter of Bolt Circle, K	Diameter of Bolt Holes, L	No. of bolts	Diameter of Raised Face, d	Height of Raised Face, f1	Flange thickness, C	Length of Flange, H	Neck Diameter, N		Wall thickness, S	Length of right end, H1	Radius of Corners, r
	Series I	Series II									Series I	Series II			
10	17.2	14	75	50	11	4	35	2	12	28	26		2.0	6	4
15	21.3	18	80	55	11	4	40	2	12	30	30		2.0	6	4
20	26.9	25	90	65	11	4	50	2	14	32	38		2.3	6	4
25	33.7	32	100	75	11	4	60	2	14	35	42		2.6	6	4
32	42.4	38	120	90	14	4	70	2	14	35	55		2.6	6	6
40	48.3	45	130	100	14	4	80	3	14	38	62		2.6	7	6
50	60.3	57	140	110	14	4	90	3	14	38	74		2.9	8	6
65	76.1	79	160	130	14	4	110	3	14	38	88		2.9	9	6
80	88.9	89	190	150	18	4	128	3	16	42	102		3.2	10	8
100	114.3	108	210	170	18	4	148	3	16	45	130		3.6	10	8
125	139.7	133	240	200	18	8	178	3	18	48	155		4.0	10	8
150	168.3	159	265	225	18	8	202	3	18	48	184		4.5	12	10
200	219.1	219	320	280	18	8	258	3	20	55	236		6.3	15	10
250	273	273	375	335	18	12	312	3	22	60	290		6.3	15	12
300	323.9	325	440	395	22	12	365	4	22	62	342		7.1	15	12
350	355.6	377	490	445	22	12	415	4	22	62	385	390	7.1	15	12
400	406.4	426	540	495	22	16	465	4	22	65	438	440	7.1	15	12
450	457	480	595	550	22	16	520	4	22	65	492	494	7.1	15	12
500	508	530	645	600	22	20	570	4	24	68	538	545	7.1	15	12
600	610	630	755	705	26	20	670	5	30	70	640	650	7.1	16	12
700	711	720	860	810	26	24	775	5	30	76	740	740	7.1	16	12
800	813	820	975	920	30	24	880	5	30	76	842	844	7.1	16	12
900	914	920	1075	1020	30	24	980	5	30	78	942	944	7.1	16	12
1000	1016	1020	1175	1120	30	28	1080	5	30	82	1045		8.0	16	16
1200	1219	1220	1375	1320	30	32	1280	5	32	94	1245		8.0	16	16
1400	1422	1420	1575	1520	30	36	1480	5	38	96	1445		8.8	16	16
1600	1626	1620	1790	1730	30	40	1690	5	46	102	1645		10.0	20	16
1800	1829	1820	1990	1930	30	44	1890	5	46	110	1845		11.0	20	16
2000	2032	2020	2190	2130	30	48	2090	5	50	122	2045		11.0	22	16
2200	2235	2220	2405	2340	33	52	2295	5	56	129	2248		11.0	25	18
2400	2438	2420	2605	2540	33	56	2495	5	62	143	2448		11.0	25	18
2600	2620		2805	2740	33	60	2695	5	64	148	2648		11.0	25	18
2800	2820		3030	2960	36	64	2910	5	74	161	2848		11.0	25	18
3000	3020		3230	3160	36	68	3110	5	80	170	3050		11.0	25	18
3200	3220		3430	3360	36	72	3310	5	84	180	3250		11.0	25	20
3400	3420		3630	3560	36	76	3510	5	90	194	3450		11.0	28	20
3600	3620		3840	3770	36	80	3720	5	96	201	3652		11.0	28	20
3800	3820		4045	3970	39	80	3920	5	102	212	3852		11.0	28	20
4000	4020		4245	4170	39	84	4120	5	106	226	4052		11.0	28	20