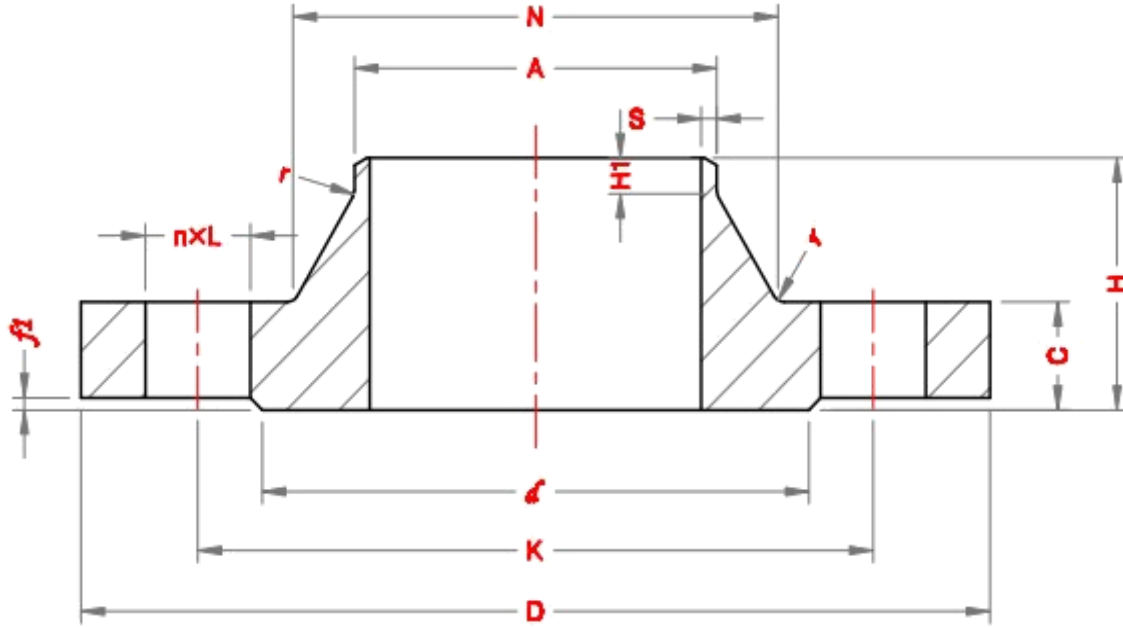


Weld Neck Flanges - EN 1092-1



PN 10

DN	Pipe OD, A		Outside Diameter, D	Diameter of Bolt Circle, K	Diameter of Bolt Holes, L	No. of bolts	Diameter of Raised Face, d	Height of Raised Face, f1	Flange thickness, C	Length of Flange, H	Neck Diameter, N		Wall thick, S	Length of right end, H1	Radius of Corners, r
	Series I	Series II									Series I	Series II			
10	17.2	14	90	60	14	4	40	2	16	35	28		2.0	6	4
15	21.3	18	95	65	14	4	45	2	16	38	32		2.0	6	4
20	26.9	25	105	75	14	4	58	2	18	40	40		2.3	6	4
25	33.7	32	115	85	14	4	68	2	18	40	46		2.6	6	4
32	42.4	38	140	100	18	4	78	2	18	42	56		2.6	6	6
40	48.3	45	150	110	18	4	88	3	18	45	64		2.6	7	6
50	60.3	57	165	125	18	4	102	3	18	45	74		2.9	8	6
65	76.1	79	185	145	18	8	122	3	18	45	92		2.9	10	6
80	88.9	89	200	160	18	8	138	3	20	50	105		3.2	10	6
100	114.3	108	220	180	18	8	158	3	20	52	131		3.6	12	8
125	139.7	133	250	210	18	8	188	3	22	55	156		4.0	12	8
150	168.3	159	285	240	22	8	212	3	22	55	184		4.5	12	10
200	219.1	219	340	295	22	8	268	3	24	62	234		6.3	16	10
250	273	273	395	350	22	12	320	3	26	68	292		6.3	16	12
300	323.9	325	445	400	22	12	370	4	26	68	342		7.1	16	12
350	355.6	377	505	460	22	16	430	4	26	68	385	400	7.1	16	12
400	406.4	426	565	515	26	16	482	4	26	72	440	445	7.1	16	12
450	457	480	615	565	26	20	532	4	28	72	488	500	7.1	16	12
500	508	530	670	620	26	20	585	4	28	75	542	550	7.1	16	12
600	610	630	780	725	30	20	685	5	30	82	642	650	8.0	18	12
700	711	720	895	840	30	24	800	5	35	85	746		8.8	18	12
800	813	820	1015	950	33	24	905	5	38	96	850		8.8	18	12
900	914	920	1115	1050	33	28	1005	5	38	99	950		12.5	20	12
1000	1016	1020	1230	1160	36	28	1110	5	44	105	1052		12.5	20	16
1200	1219	1220	1455	1380	39	32	1330	5	55	132	1256		12.5	25	16
1400	1422	1420	1675	1590	42	36	1535	5	65	143	1460		14.2	25	16
1600	1626	1620	1915	1820	48	40	1760	5	75	159	1666		16.0	25	16
1800	1829	1820	2115	2020	48	44	1960	5	85	175	1868		17.5	30	16
2000	2032	2020	2325	2230	48	48	2170	5	90	186	2072		17.5	30	16
2200	2235		2550	2440	56	52	2370	5	100	202	2275		20.0	35	18
2400	2438		2760	2650	56	56	2570	5	110	218	2478		22.2	35	18
2600	2620		2960	2850	56	60	2780	5	110	224	2680		25.0	40	18
2800	2820		3180	3070	56	64	3000	5	124	244	2882		25.0	40	18
3000	3020		3405	3290	62	68	3210	5	132	257	3085		32.0	45	18