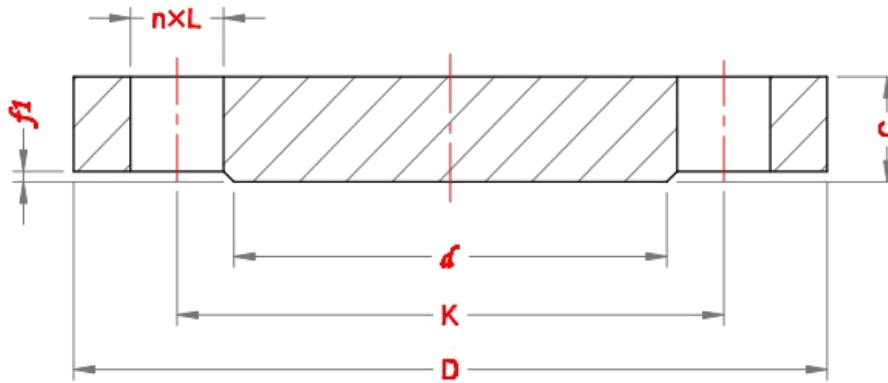


**Blind Flanges - EN 1092-1**



**PN 2.5**

DN	Outside Diameter, D	Diameter of Bolt Circle, K	Dia of Bolt Hole, L	No. of bolt	Size of Bolt	Flange thickness, C	Diameter of Raised Face, d	Height of Raised Face, f1
10	75	50	11	4	M10	12	35	2
15	80	55	11	4	M10	12	40	2
20	90	65	11	4	M10	14	50	2
25	100	75	11	4	M10	14	60	2
32	120	90	14	4	M12	14	70	2
40	130	100	14	4	M12	14	80	3
50	140	110	14	4	M12	14	90	3
65	160	130	14	4	M12	14	110	3
80	190	150	18	4	M16	16	128	3
100	210	170	18	4	M16	16	148	3
125	240	200	18	8	M16	18	178	3
150	265	225	18	8	M16	18	202	3
200	320	280	18	8	M16	20	258	3
250	375	335	18	12	M16	22	312	3
300	440	395	22	12	M20	22	365	4
350	490	445	22	12	M20	22	415	4
400	540	495	22	16	M20	22	455	4
450	595	550	22	16	M20	24	520	4
500	645	600	22	20	M20	24	570	4
600	755	705	26	20	M24	30	670	5
700	860	810	26	24	M24	40	775	5
800	975	920	30	24	M27	44	880	5
900	1075	1020	30	24	M27	48	980	5
1000	1175	1120	30	28	M27	52	1080	5
1200	1375	1320	30	32	M27	50	1280	5
1400	1575	1520	30	36	M27	57	1480	5
1600	1790	1730	30	40	M27	64	1690	5
1800	1990	1930	30	44	M27	70	1890	5
2000	2190	2130	30	48	M27	78	2090	5