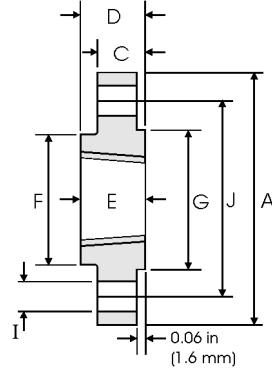




# Threaded Flanges - ANSI B16.5



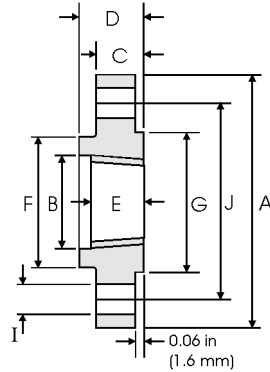
## Class 150 lb

Pipe		Flange Data				Hub	Raised Face	Drilling Data			Weight
Nominal Pipe Size		A	C	D	E	F	G	H	I	J	
	Outside Diameter	Overall Diameter	Flange Thickness min	Overall Length	Threaded length min	Hub Diameter	Face Diameter	Number of Holes	Bolt Hole Diameter	Diameter of Circle of Holes	kg/piece
	in mm	in mm	in mm	in mm	in mm	in mm	in mm		in mm	in mm	
1/2	0.840	3.500	0.440	0.620	0.620	1.190	1.380	4	0.620	2.380	0.39
	21.30	88.90	11.20	15.70	15.70	30.20	35.10		15.70	60.45	
3/4	1.050	3.880	0.500	0.620	0.620	1.500	1.690	4	0.620	2.750	0.56
	26.70	98.60	12.70	15.70	15.70	38.10	42.90		15.70	69.85	
1	1.315	4.250	0.560	0.690	0.690	1.940	2.000	4	0.620	3.120	0.78
	33.40	108.0	14.20	17.50	17.50	49.30	50.80		15.70	79.25	
1 1/4	1.660	4.620	0.620	0.810	0.810	2.310	2.500	4	0.620	3.500	1.03
	42.20	117.3	15.70	20.60	20.60	58.70	63.50		15.70	88.90	
1 1/2	1.900	5.000	0.690	0.880	0.880	2.560	2.880	4	0.620	3.880	1.32
	48.30	127.0	17.50	22.40	22.30	65.00	73.15		15.70	98.60	
2	2.375	6.000	0.750	1.000	1.000	3.060	3.620	4	0.750	4.750	2.06
	60.30	152.4	19.10	25.40	25.40	77.70	91.90		19.10	120.7	
2 1/2	2.875	7.000	0.880	1.120	1.120	3.560	4.120	4	0.750	5.500	3.28
	73.00	177.8	22.40	28.40	28.40	90.40	104.6		19.10	139.7	
3	3.500	7.500	0.940	1.190	1.190	4.250	5.000	4	0.750	6.000	3.85
	88.90	190.5	23.90	30.20	30.20	108.0	127.0		19.10	152.4	
3 1/2	4.000	8.500	0.940	1.250	1.250	4.810	5.500	8	0.750	7.000	4.81
	101.6	215.9	23.90	31.75	31.75	122.2	139.7		19.10	177.8	
4	4.500	9.000	0.940	1.310	1.310	5.310	6.190	8	0.750	7.500	5.30
	114.3	228.6	23.90	33.30	33.30	134.9	157.2		19.10	190.5	
5	5.563	10.00	0.940	1.440	1.440	6.440	7.310	8	0.880	8.500	6.07
	141.3	254.0	23.90	36.60	36.60	163.6	185.7		22.40	215.9	
6	6.625	11.00	1.000	1.560	1.560	7.560	8.500	8	0.880	9.500	7.45
	168.3	279.4	25.40	39.60	39.60	192.0	215.9		22.40	241.3	
8	8.625	13.50	1.120	1.750	1.750	9.690	10.62	8	0.880	11.75	12.1
	219.1	342.9	28.40	44.50	44.50	246.1	269.7		22.40	298.5	
10	10.75	16.00	1.190	1.940	1.940	12.00	12.75	12	1.000	14.25	16.5
	273.0	406.4	30.20	49.30	49.30	304.8	323.9		25.40	362.0	
12	12.75	19.00	1.250	2.190	2.190	14.38	15.00	12	1.000	17.00	26.2
	323.8	482.6	31.75	55.60	55.60	365.3	381.0		25.40	431.8	
14	14.00	21.00	1.380	2.250	2.250	15.75	16.25	12	1.120	18.75	34.6
	355.6	533.4	35.10	57.15	57.15	400.1	412.7		28.40	476.3	
16	16.00	23.50	1.440	2.500	2.500	18.00	18.50	16	1.120	21.25	44.8
	406.4	596.9	36.60	63.50	63.50	457.2	469.9		28.40	539.8	
18	18.00	25.00	1.560	2.690	2.690	19.88	21.00	16	1.250	22.75	48.9
	457.2	635.0	39.60	68.30	68.30	505.0	533.4		31.75	577.9	
20	20.00	27.50	1.690	2.880	2.880	22.00	23.00	20	1.250	25.00	61.9
	508.0	698.5	42.90	73.15	73.15	558.8	584.2		31.75	635.0	
24	24.00	32.00	1.880	3.250	3.250	26.12	27.25	20	1.380	29.50	86.9
	609.6	812.8	47.80	82.60	82.60	663.4	692.2		35.10	749.3	



### Notes

- The thread conforms to ASME B1.20.1 NTP threads as described in Section 10. (The only exceptions are small male and female plain face threaded flanges which use NPSL recount threads.)
- Class 150 threaded flanges are made without a counterbore. Threads are chamfered to the major diameter (approx.) at an angle of 45° (approx.) at the back of the flange.
- Weights are based on manufacturer's data and are approximate.

# Threaded Flanges - ANSI B16.5



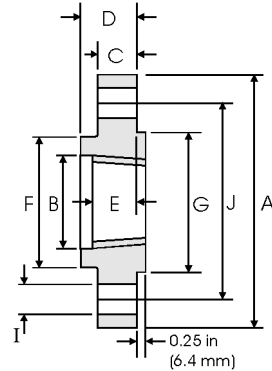
## Class 300 lb

Nominal Pipe Size	Pipe	Flange Data					Hub	Raised Face	Drilling Data			Weight
		A	B	C	D	E	F	G	H	I	J	
	Outside Diameter in mm	Overall Diameter in mm	Counter-bore min in mm	Flange Thickness min in mm	Overall Length in mm	Threaded length min in mm	Hub Diameter in mm	Face Diameter in mm	Number of Holes	Bolt Hole Diameter in mm	Diameter of Circle of Holes in mm	kg/ piece
1/2	0.840	3.750	0.930	0.560	0.880	0.620	1.500	1.380	4	0.620	2.620	0.64
	21.30	95.20	23.60	14.20	22.30	15.70	38.10	35.00		15.70	66.55	
3/4	1.050	4.620	1.140	0.620	1.000	0.620	1.880	1.690	4	0.750	3.250	1.12
	26.70	117.3	29.00	15.70	25.40	15.70	47.70	42.90		19.00	82.50	
1	1.315	4.880	1.410	0.690	1.060	0.690	2.120	2.000	4	0.750	3.500	1.36
	33.40	123.9	35.80	17.50	26.90	17.50	53.80	50.80		19.00	88.90	
1 1/4	1.660	5.250	1.750	0.750	1.060	0.810	2.500	2.500	4	0.750	3.880	1.68
	42.20	133.3	44.40	19.00	26.90	20.60	63.50	63.50		19.00	98.50	
1 1/2	1.900	6.120	1.980	0.810	1.190	0.880	2.750	2.880	4	0.880	4.500	2.49
	48.30	155.4	50.50	20.60	30.20	22.30	69.85	73.15		22.30	114.3	
2	2.375	6.500	2.500	0.880	1.310	1.120	3.310	3.620	8	0.750	5.000	2.87
	60.30	165.1	63.50	22.30	33.20	28.40	84.00	91.90		19.00	127.0	
2 1/2	2.875	7.500	3.000	1.000	1.500	1.250	3.940	4.120	8	0.880	5.880	4.32
	73.00	190.5	76.20	25.40	38.10	31.70	100.0	104.6		22.30	149.3	
3	3.500	8.250	3.630	1.120	1.690	1.250	4.620	5.000	8	0.880	6.620	5.85
	88.90	209.5	92.20	28.40	42.90	31.70	117.3	127.0		22.30	168.1	
3 1/2	4.000	9.000	4.130	1.190	1.750	1.440	5.250	5.500	8	0.880	7.250	7.34
	101.6	228.6	104.9	30.20	44.40	36.50	133.3	139.7		22.30	184.1	
4	4.500	10.00	4.630	1.250	1.880	1.440	5.750	6.190	8	0.880	7.880	9.61
	114.3	254.0	117.6	31.70	47.70	36.50	146.0	157.2		22.30	200.1	
5	5.563	11.00	5.690	1.380	2.000	1.690	7.000	7.310	8	0.880	9.250	12.3
	141.3	279.4	144.5	35.00	50.80	42.90	177.8	185.7		22.30	234.9	
6	6.625	12.50	6.750	1.440	2.060	1.810	8.120	8.500	12	0.880	10.62	15.6
	168.3	317.5	171.4	36.50	52.30	45.90	206.2	215.9		22.30	269.7	
8	8.625	15.00	8.750	1.620	2.440	2.000	10.25	10.62	12	1.000	13.00	24.2
	219.1	381.0	222.2	41.10	61.90	50.80	260.3	269.7		25.40	330.2	
10	10.75	17.50	10.88	1.880	2.620	2.190	12.62	12.75	16	1.120	15.25	34.1
	273.0	444.5	276.3	47.70	66.55	55.60	320.5	323.9		28.40	387.3	
12	12.75	20.50	12.94	2.000	2.880	2.380	14.75	15.00	16	1.250	17.75	49.8
	323.8	520.7	328.7	50.80	73.15	60.45	374.6	381.0		31.70	450.8	
14	14.00	23.00	14.19	2.120	3.000	2.500	16.75	16.25	20	1.250	20.25	69.9
	355.6	584.2	360.4	53.80	76.20	63.50	425.4	412.7		31.70	514.3	
16	16.00	25.50	16.19	2.250	3.250	2.690	19.00	18.50	20	1.380	22.50	88.1
	406.4	647.7	411.2	57.15	82.50	68.30	482.6	469.9		35.00	571.5	
18	18.00	28.00	18.19	2.380	3.500	2.750	21.00	21.00	24	1.380	24.75	109
	457.2	711.2	462.0	60.45	88.90	69.85	533.4	533.4		35.00	628.6	
20	20.00	30.50	20.19	2.500	3.750	2.880	23.12	23.00	24	1.380	27.00	134
	508.0	774.7	512.8	63.50	95.2	73.15	587.2	584.2		35.00	685.8	
24	24.00	36.00	24.19	2.750	4.190	3.250	27.62	27.25	24	1.620	32.00	201
	609.6	914.4	614.4	69.85	106.4	82.50	701.5	692.2		41.10	812.8	


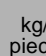
### Notes

- The thread conforms to ASME B1.20.1 NTP threads as described in Section 10. (The only exceptions are small male and female plain face threaded flanges which use NPSL locknut threads.)
- Class 300 and higher threaded flanges are counter-bored. Threads are chamfered to the counterbore at an angle of 45° (approx).
- Weights are based on manufacturer's data and are approximate.

# Threaded Flanges - ANSI B16.5



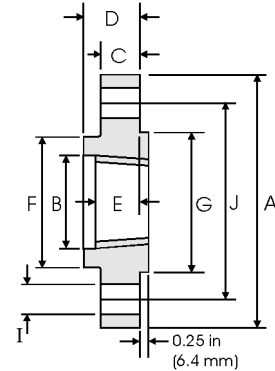
## Class 400 lb

Pipe		Flange Data					Hub	Raised Face	Drilling Data			Weight
Nominal Pipe Size		A	B	C	D	E	F	G	H	I	J	
	Outside Diameter	Overall Diameter	Counter-bore min	Flange Thickness min	Overall Length	Threaded length min	Hub Diameter	Face Diameter	Number of Holes	Bolt Hole Diameter	Diameter of Circle of Holes	kg/ piece
	in mm	in mm	in mm	in mm	in mm	in mm	in mm	in mm				
1/2	0.840	3.750	0.930	0.560	0.880	0.620	1.500	1.380	4	0.620	2.620	0.74
	21.30	95.30	23.60	14.20	22.40	15.70	38.10	35.10				
3/4	1.050	4.620	1.140	0.620	1.000	0.620	1.880	1.690	4	0.750	3.250	1.27
	26.70	117.3	29.00	15.70	25.40	15.70	47.80	42.90				
1	1.315	4.880	1.410	0.690	1.060	0.690	2.120	2.000	4	0.750	3.500	1.52
	33.40	124.0	35.80	17.50	26.90	17.50	53.80	50.80				
1 1/4	1.660	5.250	1.750	0.810	1.120	0.810	2.500	2.500	4	0.750	3.880	2.03
	42.20	133.4	44.50	20.60	28.40	20.60	63.50	63.50				
1 1/2	1.900	6.120	1.990	0.880	1.250	0.880	2.750	2.880	4	0.880	4.500	2.96
	48.30	155.4	50.50	22.40	31.75	22.40	69.85	73.15				
2	2.375	6.500	2.500	1.000	1.440	1.120	3.310	3.620	8	0.750	5.000	3.62
	60.30	165.1	63.50	25.40	36.60	28.40	84.10	91.90				
2 1/2	2.875	7.500	3.000	1.120	1.620	1.250	3.940	4.120	8	0.880	5.880	5.28
	73.00	190.5	76.20	28.40	41.10	31.75	100.1	104.6				
3	3.500	8.250	3.630	1.250	1.810	1.380	4.620	5.000	8	0.880	6.620	7.00
	88.90	209.6	92.20	31.75	46.00	35.10	117.3	127.0				
3 1/2	4.000	9.000	4.130	1.380	1.940	1.560	5.250	5.500	8	1.000	7.250	8.84
	101.6	228.6	104.9	35.10	49.30	39.60	133.4	139.7				
4	4.500	10.00	4.630	1.380	2.000	1.440	5.750	6.190	8	1.000	7.880	11.1
	114.3	254.0	117.6	35.10	50.80	36.60	146.1	157.2				
5	5.563	11.00	5.690	1.500	2.120	1.690	7.000	7.310	8	1.000	9.250	13.9
	141.3	279.4	144.5	38.10	53.80	42.90	177.8	185.7				
6	6.625	12.50	6.750	1.620	2.250	1.810	8.120	8.500	12	1.000	10.62	18.3
	168.3	317.5	171.5	41.10	57.15	46.00	206.2	215.9				
8	8.625	15.00	8.750	1.880	2.690	2.000	10.25	10.62	12	1.120	13.00	28.6
	219.1	381.0	222.3	47.80	68.30	50.80	260.4	269.7				
10	10.75	17.50	10.88	2.120	2.880	2.190	12.62	12.75	16	1.250	15.25	39.2
	273.0	444.5	276.4	53.80	73.15	55.60	320.5	323.9				
12	12.75	20.50	12.94	2.250	3.120	2.380	14.75	15.00	16	1.380	17.75	57.0
	323.8	520.7	328.7	57.15	79.25	60.45	374.7	381.0				
14	14.00	23.00	14.19	2.380	3.310	2.500	16.75	16.25	20	1.380	20.25	79.1
	355.6	584.2	360.4	60.45	84.10	63.50	425.5	412.8				
16	16.00	25.50	16.19	2.500	3.690	2.690	19.00	18.50	20	1.500	22.50	101
	406.4	647.7	411.2	63.50	93.70	68.30	482.6	469.9				
18	18.00	28.00	18.19	2.620	3.880	2.750	21.00	21.00	24	1.500	24.75	123
	457.2	711.2	462.0	66.55	98.60	69.85	533.4	533.4				
20	20.00	30.50	20.19	2.750	4.000	2.880	23.12	23.00	24	1.620	27.00	146
	508.0	774.7	512.8	69.85	101.6	73.15	587.2	584.2				
24	24.00	36.00	24.19	3.000	4.500	3.250	27.62	27.25	24	1.880	32.00	219
	609.6	914.4	614.4	76.20	114.3	82.60	701.5	692.2				



Notes

- The thread conforms to ASME B1.20.1 NTP threads as described in Section 10. (The only exceptions are small male and female plain face threaded flanges which use NPSL locknut threads.)
- Class 300 and higher threaded flanges are counter-bored. Threads are chamfered to the counterbore at an angle of 45° (approx).
- Weights are based on manufacturer's data and are approximate.

# Threaded Flanges - ANSI B16.5



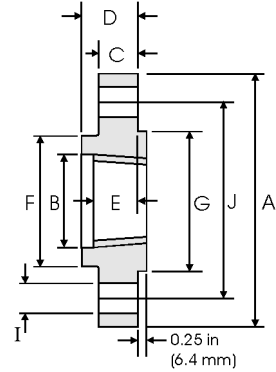
## Class 600 lb

Nominal Pipe Size	Pipe		Flange Data					Hub	Raised Face	Drilling Data			Weight
		A	B	C	D	E	F	G	H	I	J		
	Outside Diameter	Overall Diameter	Counter-bore min	Flange Thickness min	Overall Length	Threaded length min	Hub Diameter	Face Diameter	Number of Holes	Bolt Hole Diameter	Diameter of Circle of Holes	kg/piece	
	in mm	in mm	in mm	in mm	in mm	in mm	in mm	in mm		in mm	in mm		
1/2	0.840	3.750	0.930	0.560	0.880	0.620	1.500	1.380	4	0.620	2.620	0.74	
	21.30	95.20	23.60	14.20	22.40	15.70	38.10	35.10		15.70	66.55		
3/4	1.050	4.620	1.140	0.620	1.000	0.620	1.880	1.690	4	0.750	3.250	1.27	
	26.70	117.3	29.00	15.70	25.40	15.70	47.80	42.90		19.10	82.60		
1	1.315	4.880	1.410	0.690	1.060	0.690	2.120	2.000	4	0.750	3.500	1.52	
	33.40	124.0	35.80	17.50	26.90	17.50	53.80	50.80		19.10	88.90		
1 1/4	1.660	5.250	1.750	0.810	1.120	0.810	2.500	2.500	4	0.750	3.880	2.03	
	42.20	133.4	44.50	20.60	28.40	20.60	63.50	63.50		19.10	98.60		
1 1/2	1.900	6.120	1.990	0.880	1.250	0.880	2.750	2.880	4	0.880	4.500	2.96	
	48.30	155.4	50.50	22.40	31.75	22.40	69.85	73.15		22.40	114.3		
2	2.375	6.500	2.500	1.000	1.440	1.120	3.310	3.620	8	0.750	5.000	3.62	
	60.30	165.1	63.50	25.40	36.60	28.40	84.10	91.90		19.10	127.0		
2 1/2	2.875	7.500	3.000	1.120	1.620	1.250	3.940	4.120	8	0.880	5.880	5.28	
	73.00	190.5	76.20	28.40	41.10	31.75	100.1	104.6		22.40	149.4		
3	3.500	8.250	3.630	1.250	1.810	1.380	4.620	5.000	8	0.880	6.620	7.00	
	88.90	209.6	92.20	31.75	46.00	35.10	117.3	127.0		22.40	168.1		
3 1/2	4.000	9.000	4.130	1.380	1.940	1.560	5.250	5.500	8	1.000	7.250	8.84	
	101.6	228.6	104.9	35.10	49.30	39.60	133.4	139.7		25.40	184.2		
4	4.500	10.75	4.630	1.500	2.120	1.620	6.000	6.190	8	1.000	8.500	14.5	
	114.3	273.1	117.6	38.10	53.80	41.10	152.4	157.2		25.40	215.9		
5	5.563	13.00	5.690	1.750	2.380	1.880	7.440	7.310	8	1.120	10.50	24.4	
	141.3	330.2	144.5	44.50	60.45	47.80	189.0	185.7		28.40	266.7		
6	6.625	14.00	6.750	1.880	2.620	2.000	8.750	8.500	12	1.120	11.50	28.7	
	168.3	355.6	171.5	47.80	66.55	50.80	222.3	215.9		28.40	292.1		
8	8.625	16.50	8.750	2.190	3.000	2.250	10.75	10.62	12	1.250	13.75	43.4	
	219.1	419.1	222.3	55.60	76.20	57.15	273.1	269.7		31.75	349.3		
10	10.75	20.00	10.88	2.500	3.380	2.560	13.50	12.75	16	1.380	17.00	70.3	
	273.0	508.0	276.4	63.50	85.90	65.00	342.9	323.9		35.10	431.8		
12	12.75	22.00	12.94	2.620	3.620	2.750	15.75	15.00	20	1.380	19.25	84.2	
	323.8	558.8	328.7	66.55	91.90	69.85	400.1	381.0		35.10	489.0		
14	14.00	23.75	14.19	2.750	3.690	2.880	17.00	16.25	20	1.500	20.75	98.7	
	355.6	603.3	360.4	69.85	93.70	73.15	431.8	412.8		38.10	527.1		
16	16.00	27.00	16.19	3.000	4.190	3.060	19.50	18.50	20	1.620	23.75	142	
	406.4	685.8	411.2	76.20	106.4	77.70	495.3	469.9		41.10	603.3		
18	18.00	29.25	18.19	3.250	4.620	3.120	21.50	21.00	20	1.750	25.75	173	
	457.2	743.0	462.0	82.60	117.3	79.25	546.1	533.4		44.50	654.1		
20	20.00	32.00	20.19	3.500	5.000	3.250	24.00	23.00	24	1.750	28.50	220	
	508.0	812.8	512.8	88.90	127.0	82.60	609.6	584.2		44.50	723.9		
24	24.00	37.00	24.19	4.000	5.500	3.620	28.25	27.25	24	2.000	33.00	312	
	609.6	939.8	614.4	101.6	139.7	91.90	717.6	692.2		50.80	838.2		



Notes

- The thread conforms to ASME B1.20.1 NTP threads as described in Section 10. (The only exceptions are small male and female plain face threaded flanges which use NPSL locknut threads.)
- Class 300 and higher threaded flanges are counter-bored. Threads are chamfered to the counterbore at an angle of 45° (approx).
- Weights are based on manufacturer's data and are approximate.

## Threaded Flanges - ANSI B16.5



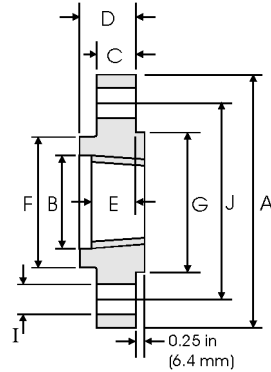
### Class 900 lb

Pipe		Flange Data					Hub	Raised Face	Drilling Data			Weight
Nominal Pipe Size		A	B	C	D	E	F	G	H	I	J	
	Outside Diameter	Diameter Overall	Counter-bore min	Flange Thickness min	Overall Length	Threaded length min	Hub Diameter	Face Diameter	Number of Holes	Bolt Hole Diameter	Diameter of Circle of Holes	kg/ piece
	in mm	in mm	in mm	in mm	in mm	in mm	in mm	in mm				
1/2	0.840	4.750	0.930	0.880	1.250	0.880	1.500	1.380	4	0.880	3.250	1.74
	21.30	120.6	23.60	22.30	31.70	22.30	38.10	35.10				
3/4	1.050	5.120	1.140	1.000	1.380	1.000	1.750	1.690	4	0.880	3.500	2.34
	26.70	130.0	29.00	25.40	35.00	25.40	44.40	42.90				
1	1.315	5.880	1.410	1.120	1.620	1.120	2.060	2.000	4	1.000	4.000	3.44
	33.40	149.3	35.80	28.40	41.10	28.40	52.30	50.80				
1 1/4	1.660	6.250	1.750	1.120	1.620	1.190	2.500	2.500	4	1.000	4.380	3.91
	42.20	158.7	44.40	28.40	41.10	30.20	63.50	63.50				
1 1/2	1.900	7.000	1.990	1.250	1.750	1.250	2.750	2.880	4	1.120	4.880	5.36
	48.30	177.8	50.50	31.70	44.50	31.70	69.85	73.15				
2	2.375	8.500	2.500	1.500	2.250	1.500	4.120	3.620	8	1.000	6.500	9.85
	60.30	215.9	63.50	38.10	57.15	38.10	104.6	91.90				
2 1/2	2.875	9.620	3.000	1.620	2.500	1.880	4.880	4.120	8	1.120	7.500	13.7
	73.00	244.3	76.20	41.10	63.50	47.70	123.9	104.6				
3	3.500	9.500	3.630	1.500	2.120	1.620	5.000	5.000	8	1.000	7.500	11.6
	88.90	241.3	92.20	38.10	53.80	41.10	127.0	127.0				
4	4.500	11.50	4.630	1.750	2.750	1.880	6.250	6.190	8	1.250	9.250	19.7
	114.3	292.1	117.6	44.40	69.85	47.80	158.7	157.2				
5	5.563	13.75	5.690	2.000	3.120	2.120	7.500	7.310	8	1.380	11.00	31.9
	141.3	349.2	144.5	50.80	79.25	53.80	190.5	185.7				
6	6.625	15.00	6.750	2.190	3.380	2.250	9.250	8.500	12	1.250	12.50	41.1
	168.3	381.0	171.4	55.60	85.80	57.15	234.9	215.9				
8	8.625	18.50	8.750	2.500	4.000	2.500	11.75	10.62	12	1.500	15.50	70.7
	219.1	469.9	222.2	63.50	101.6	63.50	298.4	269.7				
10	10.75	21.50	10.88	2.750	4.250	2.810	14.50	12.75	16	1.500	18.50	101
	273.0	546.1	276.3	69.85	107.9	71.40	368.3	323.9				
12	12.75	24.00	12.94	3.120	4.620	3.000	16.50	15.00	20	1.500	21.00	133
	323.8	609.6	328.7	79.40	117.3	76.20	419.1	381.0				
14	14.00	25.25	14.19	3.380	5.120	3.250	17.75	16.25	20	1.620	22.00	153
	355.6	641.3	360.4	85.70	130.0	82.50	450.8	412.7				
16	16.00	27.75	16.19	3.500	5.250	3.380	20.00	18.50	20	1.750	24.25	185
	406.4	704.8	411.2	88.90	133.3	85.90	508.0	469.9				
18	18.00	31.00	18.19	4.000	6.000	3.500	22.25	21.00	20	2.000	27.00	258
	457.2	787.4	462.0	101.6	152.4	88.90	565.1	533.4				
20	20.00	33.75	20.19	4.250	6.250	3.620	24.50	23.00	20	2.120	29.50	317
	508.0	857.2	512.8	107.9	158.7	91.90	622.3	584.2				
24	24.00	41.00	24.19	5.500	8.000	4.000	29.50	27.25	20	2.620	35.50	606
	609.6	1041.4	614.4	139.7	203.2	101.6	749.3	692.2				



#### Notes

- The thread conforms to ASME B1.20.1 NTP threads as described in Section 10. (The only exceptions are small male and female plain face threaded flanges which use NPSL locknut threads.)
- Class 300 and higher threaded flanges are counter-bored. Threads are chamfered to the counterbore at an angle of 45° (approx).
- Weights are based on manufacturer's data and are approximate.

# Threaded Flanges - ANSI B16.5



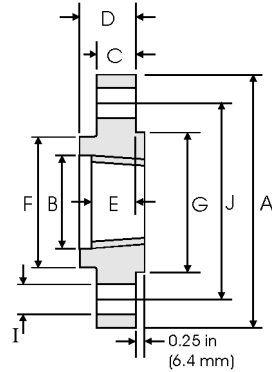
## Class 1500 lb

Nominal Pipe Size	Pipe	Flange Data					Hub	Raised Face	Drilling Data			Weight
		<b>A</b>	<b>B</b>	<b>C</b>	<b>D</b>	<b>E</b>	<b>F</b>	<b>G</b>	<b>H</b>	<b>I</b>	<b>J</b>	
	Outside Diameter	Overall Diameter	Counter-bore min	Flange Thickness min	Overall Length	Threaded length min	Hub Diameter	Face Diameter	Number of Holes	Bolt Hole Diameter	Diameter of Circle of Holes	kg/ piece
in mm	in mm	in mm	in mm	in mm	in mm	in mm	in mm	in mm		in mm	in mm	
1/2	0.840 21.30	4.750 120.6	0.930 23.60	0.880 22.30	1.250 31.70	0.880 22.30	1.500 38.10	1.380 35.00	4	0.880 22.30	3.250 82.50	1.74
3/4	1.050 26.70	5.120 130.0	1.140 29.00	1.000 25.40	1.380 35.00	1.000 25.40	1.750 44.40	1.690 42.90		0.880 22.30	3.500 88.90	
1	1.315 33.40	5.880 149.3	1.410 35.80	1.120 28.40	1.620 41.10	1.120 28.40	2.060 52.30	2.000 50.80	4	1.000 25.40	4.000 101.6	3.44
	1.660 42.20	6.250 158.7	1.750 44.40	1.120 28.40	1.620 41.10	1.190 30.20	2.500 63.50	2.500 63.50		1.000 25.40	4.380 111.2	
1 1/4	1.900 48.30	7.000 177.8	1.990 50.50	1.250 31.70	1.750 44.50	1.250 31.70	2.750 69.85	2.880 73.15	4	1.120 28.40	4.880 123.9	5.36
	2.375 60.30	8.500 215.9	2.500 63.50	1.500 38.10	2.250 57.15	1.500 38.10	4.120 104.6	3.620 91.90		1.000 25.40	6.500 165.1	
2	2.875 73.00	9.620 244.3	3.000 76.20	1.620 41.10	2.500 63.50	1.880 47.70	4.880 123.9	4.120 104.6	8	1.120 28.40	7.500 190.5	13.7



### Notes

- The thread conforms to ASME B1.20.1 NTP threads as described in Section 10. (The only exceptions are small male and female plain face threaded flanges which use NPSL locknut threads.)
- Class 300 and higher threaded flanges are counter-bored. Threads are chamfered to the counterbore at an angle of 45° (approx).
- Weights are based on manufacturer's data and are approximate.

## Threaded Flanges - ANSI B16.5



### Class 2500 lb

Nominal Pipe Size	Pipe	Flange Data					Hub	Raised Face	Drilling Data			Weight
		A	B	C	D	E	F	G	H	I	J	
	Outside Diameter	Overall Diameter	Counter-bore min	Flange Thickness min	Overall Length	Threaded length min	Hub Diameter	Face Diameter	Number of Holes	Bolt Hole Diameter	Diameter of Circle of Holes	kg/ piece
in mm	in mm	in mm	in mm	in mm	in mm	in mm	in mm	in mm		in mm	in mm	
1/2	0.840	5.250	0.930	1.190	1.560	1.120	1.690	1.380	4	0.880	3.500	2.95
	21.30	133.4	23.60	30.20	39.60	28.40	42.90	35.10		22.40	88.90	
3/4	1.050	5.500	1.140	1.250	1.690	1.250	2.000	1.690	4	0.880	3.750	3.44
	26.70	139.7	29.00	31.75	42.90	31.75	50.80	42.90		22.40	95.30	
1	1.315	6.250	1.410	1.380	1.880	1.380	2.250	2.000	4	1.000	4.250	4.82
	33.40	158.8	35.80	35.10	47.80	35.10	57.15	50.80		25.40	108.0	
1 1/4	1.660	7.250	1.750	1.500	2.060	1.500	2.880	2.500	4	1.120	5.120	7.14
	42.20	184.2	44.50	38.10	52.30	38.10	73.15	63.50		28.40	130.0	
1 1/2	1.900	8.000	1.990	1.750	2.380	1.750	3.120	2.880	4	1.250	5.750	10.0
	48.30	203.2	50.50	44.50	60.45	44.50	79.25	73.15		31.75	146.1	
2	2.375	9.250	2.500	2.000	2.750	2.000	3.750	3.620	8	1.120	6.750	14.8
	60.30	235.0	63.50	50.80	69.85	50.80	95.30	91.90		28.40	171.5	
2 1/2	2.875	10.50	3.000	2.250	3.120	2.250	4.500	4.120	8	1.250	7.750	21.5
	73.00	266.7	76.20	57.15	79.25	57.15	114.3	104.6		31.75	196.9	

#### Notes

- The thread conforms to ASME B1.20.1 NTP threads as described in Section 10. (The only exceptions are small male and female plain face threaded flanges which use NPSL locknut threads.)
- Class 300 and higher threaded flanges are counter-bored. Threads are chamfered to the counterbore at an angle of 45° (approx).
- Weights are based on manufacturer's data and are approximate.